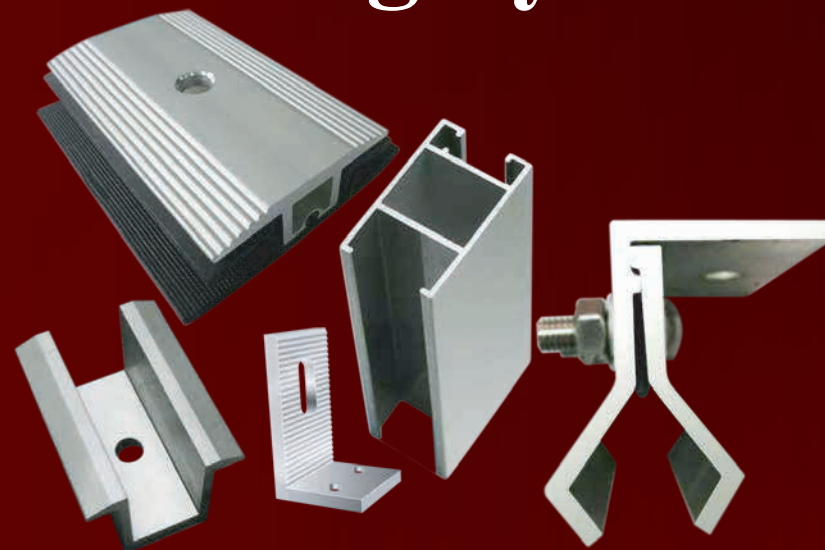




Solar Mounting System



MULTIFIT

BeiJing Multifit Electrical Technology Co.,Ltd

Company Address:503,Block 5.10# RongHuangNan Road,Beijing Economic&Technological development Zone 100176,BeiJing China

Factory address:No.15 KeChuang street. Beijing Economic&Technological development Zone 100176,BeiJing China

Tel: 86-010-87227420 Fax: 86-10-85885278

Mobile No.: 13641024477;15910870754

Wechat public No.:multifit ; Whatsapp/Wechat:0086-13641024477

Skype: eastrenergy; leslie_1008

QQ: 64570386

Email: multifit@multifitele.com 173163854@qq.com

Website: <http://www.Multifitele.com>



Contents

Multifit GROUND MOUNTING SYSTEM 地面安装系统

- 1.1 Screw pole mounting system
- 1.2 Concrete base mounting system
- 1.3 Ramming pole mounting system
- 1.4 Thin-film module mounting sydtem
- 1.5 Aluminum mounting system
- 1.6 Single ramming pole mounting system

Multifit ROOF MOUNTING SYSTEM 屋顶安装系统

- 2.1 Corrugated metallic roof mounting system-1
- 2.2 Corrugated meltallic roof mounting system-2
- 2.3 Tile roof mounting system
- 2.4 Flat roof mounting system

Multifit SOLAR MOUNTING SYSTEM ACCESSORIES 太阳能安装系统配件

- 3.1 The parameter of hook
- 3.2 The paramerer of tin roof fixture and l-feet
- 3.3 The parameter of clamp
- 3.4 The parameter of aluminum rail
- 3.5 The parameter of cant beam
- 3.6 The parameter of feet
- 3.7 The parameter of ground screw
- 3.8 The parameter of standard component

THE PROJECTS OF SOLAR MOUNTING SYSTEM 太阳能安装的项目

1.1 Screw pole mounting system

Technique data

Arrangement : Portrait 2 Rows

Install Angle: 30Degree

Main Material:Q235B Steel

Surface Treatment: Hot-dipped Galvanization

Wind Load: 110Km/h

Snow Load: 0.6KN/ m²

Service Life:25years

Key Features : Adaptable to most land conditions; low foundation cost ;short installation time; less effects on installation site (compared to concrete base);easy to remove.

1.2 Concrete Base Mounting System

Technique data

Arrangement : Portrait 2 Rows

Install Angle: 30Degree

Main Material:Q235B Steel

Surface Treatment: Hot-dipped Galvanization

Wind Load: 110Km/h

Snow Load: 0.6KN/ m²

Service Life: 25years

Key Features :

Mainly used in rocky area with rock content more than 70% or flat roof ; smart design ; reliable configuration.



螺旋地桩支架系统

项目案例

位置：意大利西西里岛

规模：1MW

建设完成时间：2010年



螺旋地桩

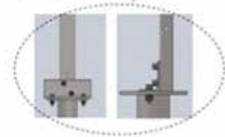
一、固定式螺旋地桩



Size: Length 1.3 m, diameter 76 mm
Surface treatment: Hot-galvanizing 60-80 μm
Weight: 7kg

二、可调节的螺旋地桩

高度可以根据场地需求自由调节



Size: Length 1.2 m-1.6m, diameter 76 mm
Surface treatment: Hot-galvanizing 60-80 μm
Weight: 9kg

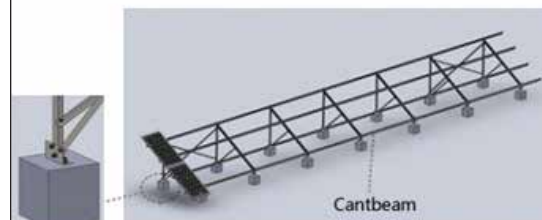


项目案例

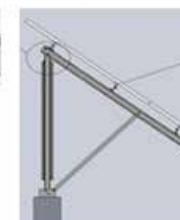
位置：中国青海

规模：20MW

建设完成时间：2011年



Cantbeam



1.3 Ramming Pole Mounting System

Technique data

Arrangement : Landscape 4 Rows

Install Angle: 30 Degree

Main Material: Q235B Steel

Surface Treatment: Hot-dipped Galvanization

Wind Load: 110Km/h

Snow Load: 0.6KN/ m²

Service Life: 25 years

Key Features : Mainly used in sand area; low foundation cost(no need for concrete base) ;short installation time.

1.4 Thin-Film Module Mounting System

Technique data

Arrangement : Landscape 6 Rows

Install Angle: 30Degree

Main Material: Q235B Steel & Aluminum Profile

Surface Treatment: Hot-dipped Galvanization for steel parts;

Anodizing for aluminum parts

Wind Load: 110Km/h

Snow Load: 0.6KN/ m²

Service Life: 25 years

Key Features : Mainly used for frameless thin film module; smart design in the joints; reliable physical property.



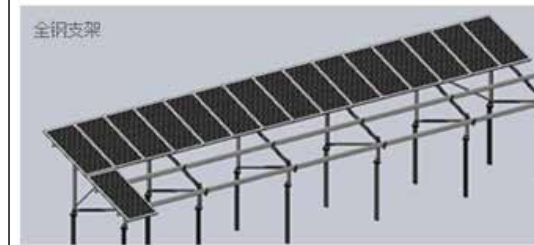
冲击桩支架系统

项目案例

位置: 中国河北省尚义

规模: 1MW

建设完成时间: 2009年



全钢支架



钢铝结合支架



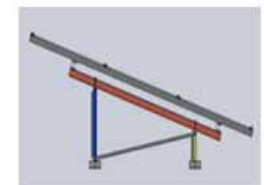
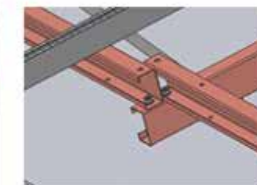
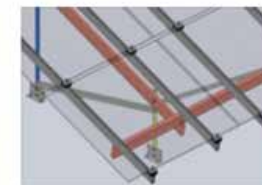
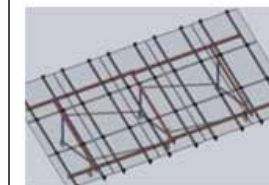
薄膜组件支架系统

项目案例

位置: 中国河北省保定

规模: 20MW

建设完成时间: 2009年



1.5 Aluminum Mounting System

Technique data

Arrangement : Portrait 2 Rows

Install Angle: 30Degree

Main Material: Aluminum

Surface Treatment: Anodizing

Wind Load: 110Km/h

Snow Load: 0.6KN/ m²

Service Life:25 years

Key Features : Mainly used in coastal area where high corrosion resistance is needed; nice appearance and high corrosion resistance.



全铝地面支架系统

项目案例

位置: 中国河北省尚义

规模: 1MW

建设完成时间: 2009年

1.6 Single Ramming Pole Mounting System

Technique data

Arrangement : Portrait 2 Rows

Install Angle: 30Degree

Main Material: Q235B Steel & Aluminum Profile

Surface Treatment: Hot-dipped Galvanization for steel parts;
Anodizing for aluminum parts

Wind Load: 110Km/h

Snow Load: 0.6KN/ m²

Service Life:25years

Key Features : Smart design with less material and components; more efficient installation.



单立柱薄膜组件地面支架系统



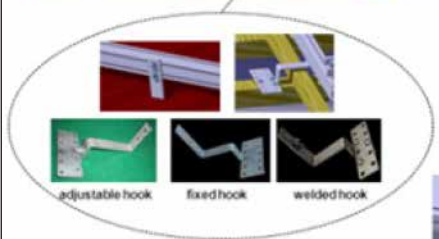
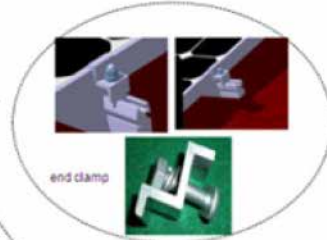
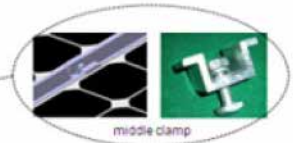
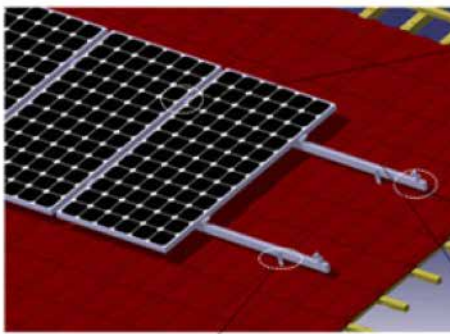
2.1 Corrugated Metallic Roof Mounting System-1

Key Features: Use different fixtures to match different corrugated metallic roof without destroying roof structure.



瓦屋顶支架系统

项目案例
 位置：澳大利亚悉尼
 规模：3.5KW
 建设完成时间：2009年



2.2 Corrugated Metallic Roof Mounting System-2

Technique data

- Arrangement : Portrait 1*10
- Install Angle: Tile horizontally
- Main Material: Al6063-T5
- Surface Treatment: Anodizing
- Wind Load: 110Km/h
- Snow Load: 0.6KN/ m²
- Service Life:25years

Key Features : Mainly used for corrugated metallic roof, with a light weight of rails and convenient components instalation ,it is quite economical and practical.



彩钢瓦屋顶支架系统

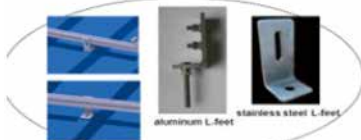
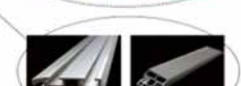
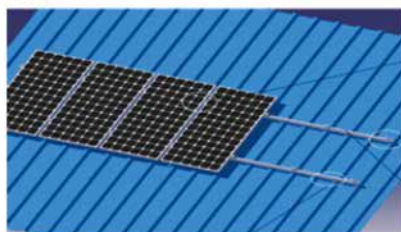
项目案例
位置: 新加坡
规模: 500KW
建设完成时间: 2010年



项目案例
位置: 伦敦
规模: 50KW
建设完成时间: 2011年

彩钢瓦屋顶支架方案

方案 1



2.3 Tile roof mounting system

Technique data

Roof Type: Flat roof

Main Material: Q235B AL6063-T5

Surface Treatment: Hot-dipped Galvanization

Bracket Mounting Angle: 20-35°

Wind Load: 100Km/h

Snow Load: 0.6KN/ m²

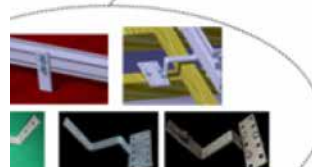
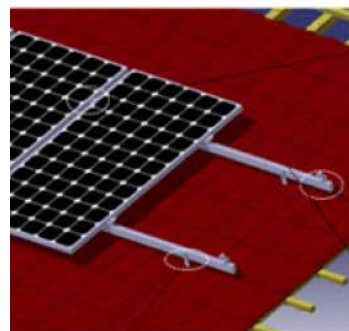
Service Life: 25 years

Key Features: Mainly used in tile roof; high flexibility and adaptability.



瓦屋顶支架系统

项目案例
位置: 澳大利亚悉尼
规模: 3.5KW
建设完成时间: 2009年



2.4 Flat roof mounting system

Technique data

Roof Type: Flat roof

Main Material: Q235B AL6063-T5

Surface Treatment: Hot-dipped Galvanization

Bracket Mounting Angle: 20-35°

Wind Load: 100Km/h

Snow Load: 0.6KN/ m²

Service Life: 25 years

Key Features: Mainly used in flat roof; high strength and easy installation.



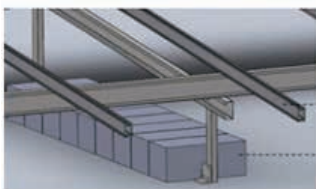
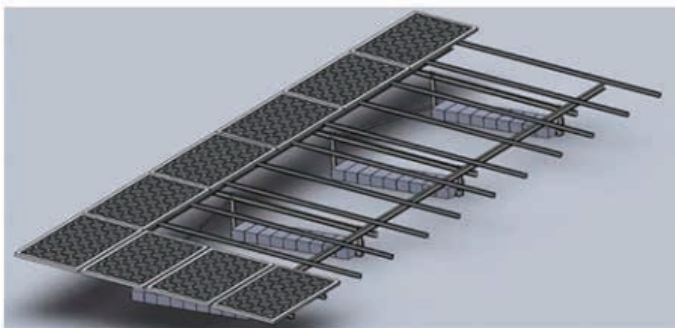
平面屋顶系统

项目案例

位置: 中国江苏

规模: 0.5MW

建设完成时间: 2011年



Aluminum rail

Cement block

3.1 The parameter of hook

Part

No.:AR001B3-00

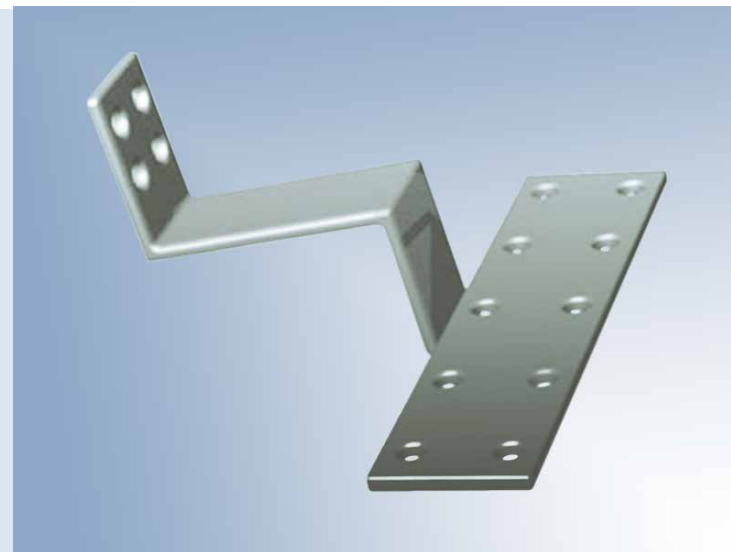
Material: Stainless steel(SUS304)

Weight: 0.72kg

Part No.:TR016

Material: Stainless steel (SUS304)

Weight: 0.65kg



Part No.:TR019

Material: Stainless steel (SUS304)

Surface treatment: welding & shot-blasting

Weight: 0.514kg



3.2 The parameter of tin roof fixture and-L-feet

Part No.:CC018

Product name: tin roof fixture

Material: AL6063-T5

Surface treatment: Anodizing /mill finish

Weight: 0.14kg

Part No.:TR021

Product name: L-feet

Material: AL6063-T5

Surface treatment: Anodizing

Weight: 0.09kg

Part No.:TR015

Product name: L-feet

Material: Stainless steel(SUS304)

Weight: 0.20 kg

Part No.:AR039

Product name: Angle relaxation clamp

Material: Aluminum (AL6063-T5)

Surface treatment: Anodizing

Weight : 0.11kg

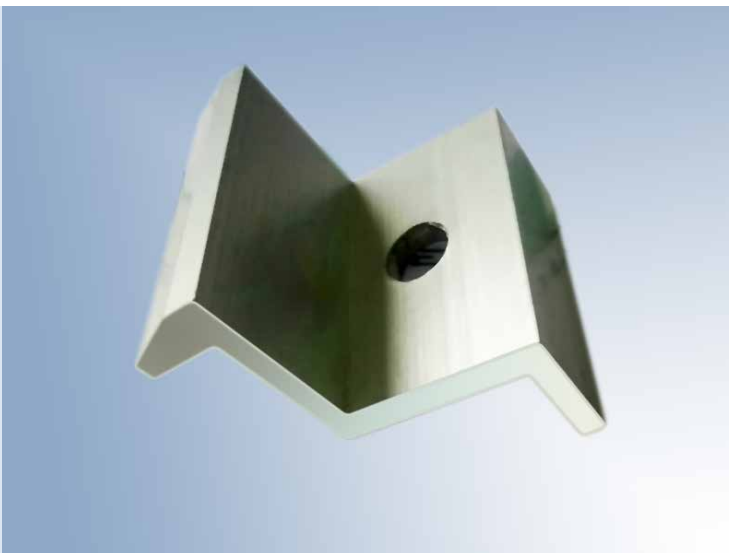


3.3 The parameter of clamp

Part No.:MC002
 Product name:
 AL6063-T5
 Surface treatment:
 Anodizing /mill
 finish
 Machining length:
 40mm
 Suitable
 frame height:
 30mm/35m-
 m/40mm/45m-
 m/46mm/50mm



Part No.:EC002
 Product name:
 AL6063-T5
 Surface treatment:
 Anodizing /mill
 finish
 Machining length:
 40mm
 Suitable
 frame height:
 30mm/35m-
 m/40mm/45m-
 m/46mm/50mm



Part No.:TC030
 Material: AL6063-T5
 Surface treatment: Anodizing /mill finish
 Machining length: 50mm
 Suitable thin-film module height: 7mm

Part No.:TC037
 Material: AL6063-T5
 Surface treatment: Anodizing /mill finish
 Machining length: 50mm
 Suitable thin-film module height: 7.5mm

3.4 The parameter of Aluminum railW

Part No.:PA009

Material: AL6063-T5

Surface treatment: Anodizing 15 μ m silver

Weight per meter: 1.52kg/m

Torque (mm⁴): I_x=53338.05

I_y=222275.4

Part No.:PA010

Material: AL6063-T5

Surface treatment: Anodizing 15 μ m silver

Weight per meter: 1.59kg/m

Torque (mm⁴): I_x=53600.73

I_y=195901.92

Part No.:PA011

Material: AL6063-T5

Surface treatment: Anodizing 15 μ m silver

Weight per meter: 1.02kg/m

Torque (mm⁴): I_x=29151.00

I_y=37151.10

Part No.:PA072

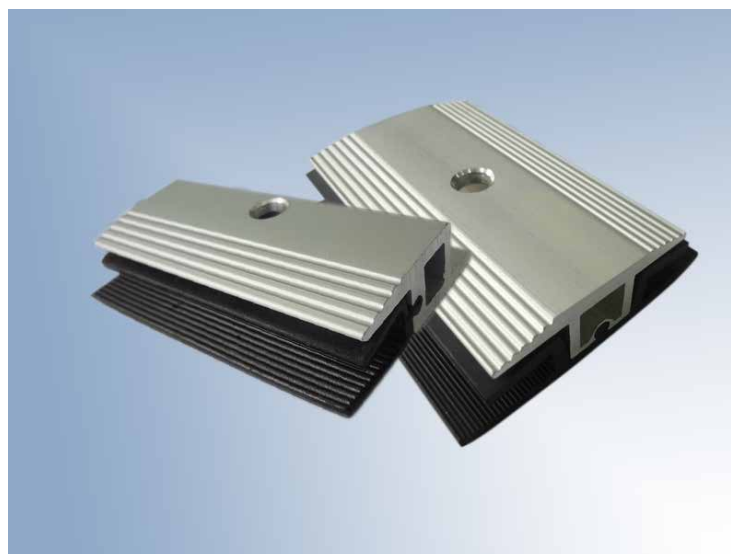
Material: AL6063-T6

Surface treatment: Anodizing 15 μ m silver

Weight per meter: 1.044kg/m

Torque (mm⁴): I_x=183575.9

I_y=69970



MULTIFIT

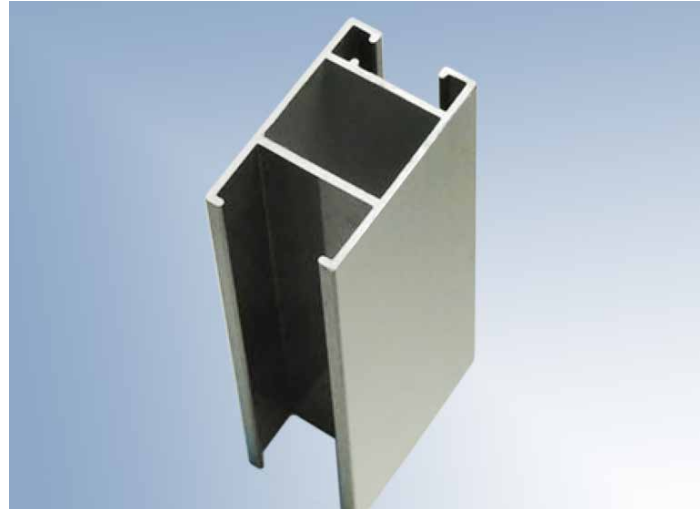


Part No.:PA087
Material: AL6063-T5
Surface treatment: Anodizing 15µm silver
Weight per meter: 0.855kg/m
Torque (mm⁴): I_x=56513
I_y=59198

Part No.:PC207
Material: AL6063-T5
Surface treatment: Anodizing 15µm silver
Weight per meter: 0.727 kg/m
Torque (mm⁴): I_x=56513
I_y=59198

Part No.:PA138
Material: AL6063-T6
Surface treatment: Anodizing 15µm silver
Weight per meter: 1.026 kg/m
Torque (mm⁴): I_x=117030
I_y=52463

Part No.:PA047
Material: AL6063-T5
Surface treatment: Anodizing 15µm silver
Weight per meter: 1.037 kg/m
Torque (mm⁴): I_x=35944.38
I_y=63249.26



3.5 The parameter of cant beam

Part No.:CB001

Material: Carbon steel (Q235B)

Surface treatment: Hot-dipped Galvanization

Size: 100*40*15*2

Weight per meter: 3.1kg/m

Part No.:CB002

Material: Carbon steel (Q235B)

Surface treatment: Hot-dipped Galvanization

Size: 80*40*15*2

Weight per meter: 2.8kg/m

Part No.:CB003

Material: Carbon steel (Q235B)

Surface treatment: Hot-dipped Galvanization

Size: 60*30*10*2.5

Weight per meter: 2.7kg/m

3.6 The parameter of feet

Part No.:AF001

Material: Carbon steel (Q235B)

Surface treatment: Hot-dipped Galvanization

Machining length: 180mm

Weight: 1kg

Part No.:AF002

Material: Carbon steel (Q235B)

Surface treatment: Hot-dipped Galvanization

Machining length: 180mm

Weight: 1kg



MULTIFIT

3.7 The parameter of Pile

Part No.: Fixed Pile

Size : Length 1.3m、1.6m、1.8m, diameter 76mm

Surface treatment: Hot-galvanization 60-80 μ m

Weight : 7kg

Product application: As a foundation part of ground mounting system, a ground screw replaces concrete foundations, which can shorten installations, which can shorten installation time and reduce labor cost.

Part No.: Adjustable Pile

Size : Length 1.3m、1.6m、1.8m, diameter 76mm

Surface treatment: Hot-galvanization 60-80 μ m

Weight : 9kg

Product application: The height-adjustable Pile could be used in complicated terrain to realize fast and flexible installation.

Part No.: The impact of pile

Size: 1700mm*90mm*50mm*3.0mm, 1900mm*90mm*50mm*3.5mm

Surface treatment: Hot-galvanization 60-80 μ m

Weight : 9.7kg, 12.2kg

Product application: Simple structure, quick installation, suitable for all kinds of site construction, and is not affected by environment, installation of speed, can greatly reduce the installation cost.



3.8 The parameter of standard component

Part No.: T-bolt

Material: Stainless steel (SUS304)

Size: M8*20/25/30/35/40/45/50/55

M10*25/30/35/40/45/50/55

Product application: T-bolt can be directly inserted into the channel of Aluminum and it can be automatically fastened during installation, which greatly reduce the installation time and cost.

Part No.: Hex bolt

Material: Stainless steel (SUS304)

Product application: Hex bolt is mainly used to connect parts of the bracket or between the bracket and its accessories.



Part No.: Hex socket bolt

Material: Stainless steel (SUS304)

Product application: Hex socket bolt is mainly used to connect parts of the bracket or between the bracket and its accessories.

