



Beijing Multifit Electrical Technology Co.,Ltd

# Solar Panel Cleaning Brush

(Semi-Automatic)

## MULR-B Single Head Brush

### Product Characteristics:

- You can carry lithium battery in a backpack , easy to carry.
- The length of the water supply pipe can be customized, please call for consultation.
- The angle of the brush head fits the solar panel, which can be adjusted with the angle of the solar panel.
- Battery life: can be used continuously for 6-7 hours.
- The length of the telescopic pole is adjustable. The shorter the pole, the lighter it is.
- The bristles are moderately soft and hard ,do not harm the photovoltaic panel.

### Use Scenarios



Solar Panel



High-Exterior Walls



Billboard / Doorhead

BRUSH



### Technical Data:

MODEL	Power Supply	Accessory	Water Supply
MULR-B01	Be connected to 110-240V power source	Water pipe and accessories*1 Cable extension line*1(8m) Telescopic rod*1 (3.5/5.5/7.5m Optional) Adapter*1 Brush head assembly * 1 set (including 1 pcs brush discs)	Standard water pressure 0.3-0.4mpa  Water pipe contains water control valve, can be connected to user's water source
MULR-B02	Be connected to lithium battery (battery can be put in backpack and carried by operator)	Lithium Battery *1 Water pipe and accessories*1 Backpack*1 Battery cable with button*1 Telescopic rod*1 (3.5/5.5/7.5m Optional) Battery charger*1 Brush head assembly * 1 set (including 1 pcs brush discs)	
MULR-B03	Be connected to 110-240V power source, or to lithium battery (user can choose suitable type for different cleaning environment)	Lithium Battery *1 Backpack*1 Battery cable with button*1 Battery charger*1 Adapter*1 Cable extension line*1(8m) Water pipe and accessories*1 Telescopic rod*1 (3.5/5.5/7.5m Optional) Brush head assembly * 1 set (including 1 pcs brush discs)	

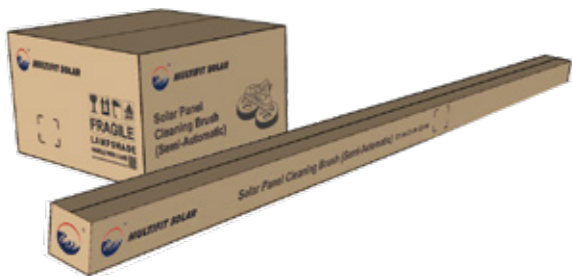
Product Details :



**Brush Head with Motor:**  
 24V DC high-power drive motor, rated power 80W\*2, rated voltage 24V, speed 200rpm  
 Weight: brush head assembly with brush disc ( 2.41kg )  
 Diameter of the Brush Disc: 280mm  
 Material: PP  
 Number of bristle circles: 8

Telescopic Rod :

Telescopic material:  
 Glass Fiber/Carbon Fiber/Aluminum Alloy  
 Wall thickness: 1-1.2mm  
 Diameter: φ39, φ43, φ47 ( Optional)  
 Length: 1.5-3.5m / 1.7-5.5m / 1.9-7.5m (Optional)



**Accessories:**  
 1/2 inch PVC water pipe ( 15 Meters Length)  
 1/2 Inch Brass Valve , 1/2 Inch Internal Thread Connector, 1/2 Inch PCF Quick Connector (φ10) , 1/2 PVC Water Pipe Plastic Joint, Spanner

Power Supply :

## MULR-B01

Mains Supply Accessories:



AC Supply ( 100V-240V )  
 1. Adapter  
 2. Power cable(8M)

## MULR-B02

Battery Supply Accessories



Lithium Battery DC Supply  
 1. Lithium battery ( Working hours: 6-7h )  
 2. Spring wire with switch button  
 3. Lithium battery charger ( 24V)

## MULR-B03

Dual DC and AC Supply



1. Adapter  
 2. Power cable(8M)  
 3. Lithium battery  
 4. Lithium battery charger ( 24V)  
 5. Spring wire with switch button

Large-capacity and portable backpack Battery Supply Accessories

## MULR-C Double head brush

### Product Introduction

One of the most popular solar panel cleaning products.  
 Double headed cleaning brush for more efficient and convenient cleaning  
 The brush head has a water outlet, and when the brush head is turned on, the water will flow out.

### Product Characteristics:



Large-capacity  
and portable backpack



AC Supply

Lithium Battery  
DC Supply

PVC water pipe (15M)



- Dual DC and AC Supply accessories are carried in a backpack, easy to carry.

- The length of the water supply pipe can be customized, please call for consultation.

05

- The angle of the brush head fits the solar panel, which can be adjusted with the angle of the solar panel.
- The shorter the pole, the lighter it is, the telescopic pole can be adjusted in length.



- The bristles are moderately soft and hard, and do not harm the photovoltaic panel.

- Battery life:  
Can be used continuously for 4-5 hours.



06

## MULR-C Double Head Brush



**Brush Head with Motor:**

24V DC high-power drive motor, rated power 80W\*2, rated voltage 24V, speed 200rpm  
 Weight: brush head assembly with brush discs ( 4kg )  
 Diameter of the Brush Disc: ( 280mm\*2 )  
 Material: PP  
 Number of bristle circles: 8

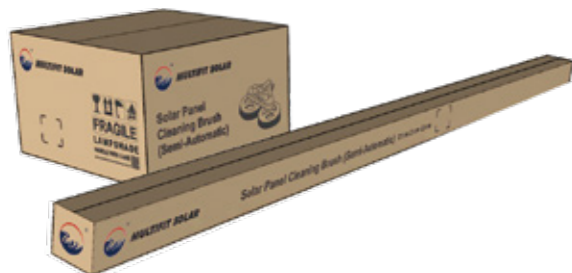
**Telescopic Rod:**

Telescopic material:  
 Glass Fiber/Carbon Fiber/Aluminum Alloy  
 Wall thickness: 1-1.2mm  
 Diameter: φ39, φ43, φ47 ( Optional )  
 Length: 1.5-3.5m / 1.7-5.5m / 1.9-7.5m ( Optional )



**Accessories:**

1/2 Inch Brass Valve , 1/2 Inch Internal Thread Connector, 1/2 Inch PCF Quick Connector (φ10) , 1/2 PVC Water Pipe Plastic Joint, Spanner



07

**Power Supply:**

## MULR-C01

**Mains Supply Accessories:**



AC Supply ( 100V-240V )  
 1. Adapter  
 2. Power cable(8M)

## MULR-C02

**Battery Supply Accessories**



Lithium Battery DC Supply  
 1. Lithium battery ( Working hours: 4-5h )  
 2. Spring wire with switch button  
 3. lithium battery charger ( 24V )

## MULR-C03

**Dual DC and AC Supply**



1. Adapter  
 2. Power cable(8M)  
 3. Lithium battery  
 4. lithium battery charger ( 24V )  
 5. Spring wire with switch button

Large-capacity and portable backpack  
 Battery Supply Accessories

08





Technical Data:


MODEL	Power Supply	Accessory	Water Supply
MULR-C01	Be connected to 110-240V power source	Water pipe and accessories*1 Cable extension line*1(8m) Adapter*1 Brush head assembly * 1 set (including 1 pair of brush discs) Telescopic rod*1 (3.5/5.5/7.5m Optional)	
MULR-C02	Be connected to lithium battery (battery can be put in backpack and carried by operator)	Lithium Battery *1 Backpack*1 Water pipe and accessories*1 Battery cable with button*1 Battery charger*1 Brush head assembly * 1 set (including 1 pair of brush discs) Telescopic rod*1 (3.5/5.5/7.5m Optional)	Standard water pressure 0.3-0.4mpa  Water pipe contains water control valve, can be connected to user's water source
MULR-C03	Connect to 110-240V power source, or to lithium battery (user can choose suitable type for different cleaning environment)	Lithium Battery *1 Backpack*1 Battery cable with button*1 Battery charger*1 Adapter*1 Cable extension line*1(8m) Water pipes and accessories*1 Brush head assembly * 1 set (including 1 pair of brush discs) Telescopic rod*1 (3.5/5.5/7.5m Optional)	








# MULTIFIT GROUP



   0086-13641024477

 0086-010-87227420  
0086-0754-81888658

Wechat Publish Number: Multifit

 [multifit@multifitele.com](mailto:multifit@multifitele.com)  
 <http://vmaxpowerpv.com>

- Beijing Headquarter:503-No.5 RongHuaGuoJi Building.No.10 Courtyard.Ronghua South Rd.BDA Zone 100176,BeiJing China
- Guangdong Plant: 3/F,JieSi Bldg.,6 Keji West Road,Hi-Tech Zone 515041,Shantou, Guangdong,China
- Shenzhen Branch:Rm1213,ChenshishanHai Bluding.No.51 PingXin North Rd.LongGang District.ShenZhen City GuangDong Province.China

