

PORTABLE POWER STATION



Product Introduction

The professional outdoor power supply has built-in high efficiency automotive grade lithium-ion battery, lithium battery management system (BMS), charging management system, power management system, DC conversion module, inverter module. Wrapped in high strength six-series alloy body shell, top design and mature production control, the product is safe and reliable, and can be powered by solar energy and charged by mains. The product has the characteristics of small volume, light weight, mute, high protection level, etc. It provides stable and reliable power endurance for outdoor electric use, travel, work, operation, rescue, home emergency.



Advantages

- Pure sine wave output, suitable for all kinds of electrical equipment.
- High quality lithium iron phosphate battery, safer and longer service life.
- USB full port support for fast charging. (DCP/ QC2.0 /QC3.0 /FCP /SCP /AFC MTK PE+1.1/2.0 / SFCP/ PD)
- Support starting by vehicle.
- Support battery expansion.
- Good internal heat dissipation performance, fully intelligent heat dissipation and silent cooling system.
- Aluminum alloy shelter with anodization process treatment, anti-combustion, anti-explosion, corrosion resistance, anti-extrusion protection products.



AED



Floodlight



Laptops



Games Console



Mini Fridge



UAV



Smartphone



GoPro



Application Scenario



Smart Charging



Outdoor Music Party



Exploration Equipment Power Supply



Power supply for office equipment



Lighting and Emergency Rescue Lighting



Contact Us

MULTIFIT

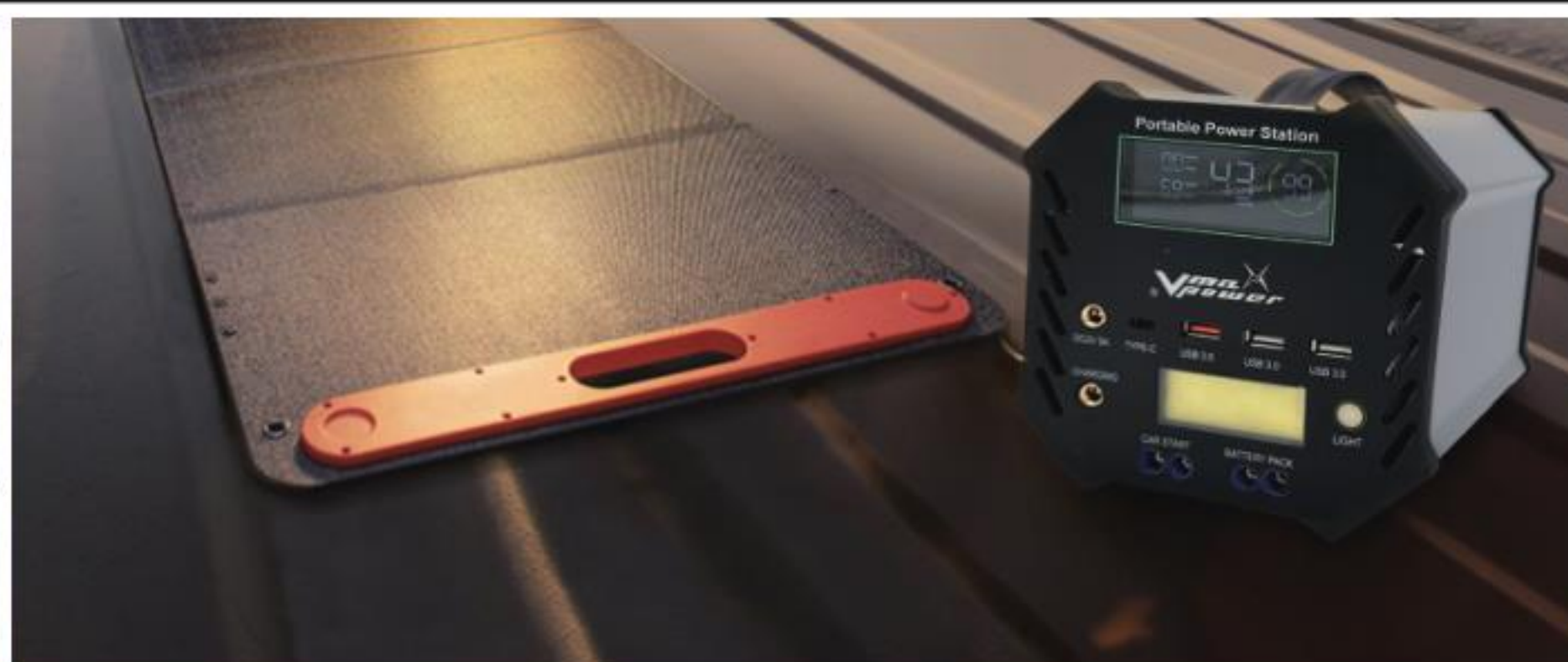
Sunshine for you Multifit to all



Company Website

Technical Data

Model		M-PSST-300W	M-PSST-600W	M-PSST-1000W	M-PSST-1500W
Rated Power		300W	600W	1000W	1500W
AC Output	Voltage	220V (110V) Customized on Demand			
	Frequency	50HZ (60HZ) Customized on Demand			
	Waveform	Pure Sine Wave			
	Distortion	≤3%			
	Efficiency	≥90%			
	Load Capacity	100%-120% 30s Protection, 125%-140% 20s Protection, ≥150% 5s Protection			
Battery	Type	Lithium Iron Phosphate Battery			
	Battery Voltage	12.8V	12.8V	12.8V	25.6V
	Total Battery Capacity	80000mAH	130000mAH	260000mAH	520000mAH
	Battery Energy	256WH	320WH	640WH	1280WH
	Cell Type	Lithium Iron Phosphate LifePO4, 2500+ Cycle Charge Times			
	BMS Protection	Overvoltage Protection, Overload Protection, Undervoltage Protection, High and Low Temperature Protection, Overcurrent Protection, Short Circuit Protection Operationally Abnormal Protection			
DC Output	DC5525 Port	DC12V 5A			
	TYPE-C	24W (Support DCP/ QC2.0 /QC3.0 /FCP /SCP /AFC MTK PE+1.1/2.0 / SFCP/PD)			
	USB-A	24W (Support DCP/ QC2.0 /QC3.0 /FCP /SCP /AFC MTK PE+1.1/2.0 / SFCP)			
Charge	DC5525 Port				
	Adapter Charging	14.6V 4A About 5 hours			
	Photovoltaic Panel	PV Panel 100W for About 4 Hours (Only PV Panels with Working Voltage of 18V are Allowed to Charge the Battery)			
Working Environment	Temperature	-10 ~ 50°C			
	Humidity	10%-90% Do Not Form Water Droplets			



Company Wechat

MULTIFIT
Sunshine for you Multifit to all



Official Accounts