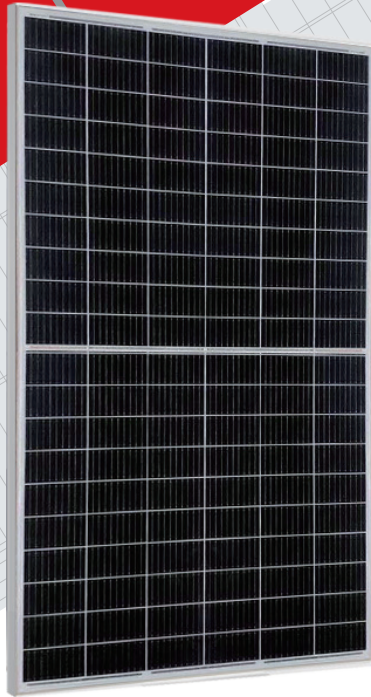


MUL-8M

330W/335W/340W/345W/350W

HALF-CELL BIFACIAL MBB MONO PERC DOUBLE GLASS MODULE



COMPREHENSIVE CERTIFICATES

IEC61215 / IEC61730 / IEC61701 / IEC62716 / IEC62804
ISO 9001: 2015 Quality management systems;
ISO 14001: 2015 Environmental management systems;
OHSAS 18001: 2007 Occupational health and safety management systems;

KEY SALIENT FEATURES



High output power



Better power generation under shadows



Strong anti-hot spot ability



Enhanced safety



Easy to install



High tolerance for harsh environment and extreme weather conditions

Beijing Multifit

Founded in 2009 (280768 Stock Exchange), the company focused on providing world-class, small-scale photovoltaic power plants for civilian solutions and an innovative research and development of renewable energy electrical products.

We had cultivated a group of ideals, experience, technical sales and R & D team. Our products are now exported to France, UK, Italy, Hungary..... (80+ Countries Export)

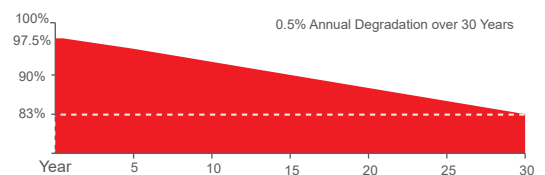
Vmaxpower & Multifit : Domestic & International Trademark.

QUALIFICATIONS AND CERTIFICATES



LINEAR PERFORMANCE WARRANTY

- 12 Years Manufacturing Warranty
- 12 Years 92% Power Output
- 30 Years 83% Power Output



Beijing Multifit Electrical Technology Co., Ltd

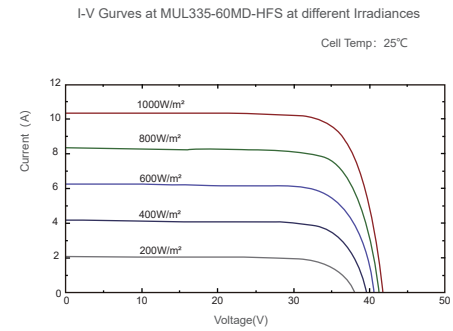
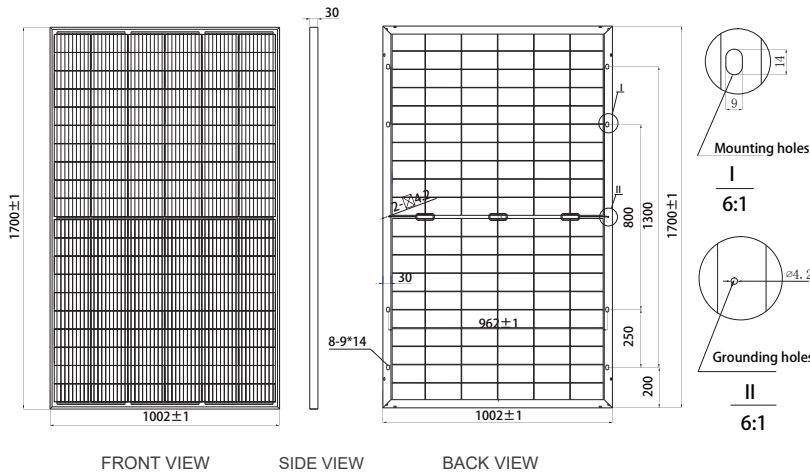
<http://www.multifitele.com>



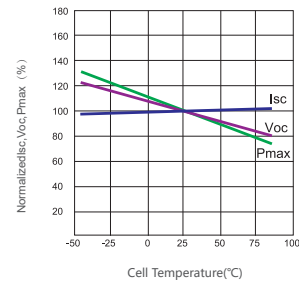
Mono Crystalline

MECHANICAL DRAWINGS

I-V CURVES



Power voltage current curve at different temperature



MECHANICAL SPECIFICATION

Cell Type	Mono Crystalline 158.75x79.375mm
Number Of Cells	120 (6x20)
Dimensions(AxBxC)	1700x1002x30mm
Weights	22.5kg
Glass	2.0/2.0mm Tempered Low Iron Glass
Aluminium Frame	Anodised Aluminium
Junction Box	Split Junction Box (IP68 ,three diode)
Connector	Mc4 Compatible
Output Cables	4.0mm²,+300mm,-300mm Customized Length

PACKING CONFIGURATION

Container	40' HQ
Pieces Per Pallet	35
Pallets Per Container	26
Pieces Per Container	910

ELECTRICAL CHARACTERISTICS

Module Type	MUL-8M-330W-120		MUL-8M-335W-120		MUL-8M-340W-120		MUL-8M-345W-120		MUL-8M-350W-120	
	STC	NOCT	STC	NOCT	STC	NOCT	STC	NOCT	STC	NOCT
Maximum Power At STC(Pmax)	330W	248.1W	335W	251.8W	340W	255.6W	345W	259.3W	350W	263.1W
Short Circuit Current(Isc)	10.30A	8.34A	10.39A	8.41A	10.48A	8.48A	10.57A	8.56A	10.66A	8.63A
Open Circuit Voltage(Voc)	41.6V	38.8V	41.8V	39.0V	42.0V	39.2V	42.3V	39.4V	42.5V	39.6V
Maximum Power Current(Imp)	9.76A	7.90A	9.85A	7.97A	9.94A	8.04A	10.03A	8.11A	10.12A	8.18A
Maximum Power Voltage(Vmpp)	33.8V	31.4V	34.0V	31.6V	34.2V	31.8V	34.4V	32.0V	34.6V	32.2V
Module Efficiency	19.37%		19.67%		19.96%		20.25%		20.55%	
Power Tolerance	0~+5W		0~+5W		0~+5W		0~+5W		0~+5W	
Maximum System Voltage	VDC 1500V									
Maximum Series Fuse	20A									
Increased Snowload Acc.to Iec 61215	5400Pa									
Operating Temperature	-40~+85°C									
Number Of Bypass Diodes	3									
Norminal Operating Cell Temperature(Noct)	45°C±2°C									
Temperature Coefficient Of Pmax	-0.36%/°C									
Temperature Coefficient Of Voc	-0.29%/°C									
Temperature Coefficient Of Isc	0.05%/°C									

ELECTRICAL CHARACTERISTICS WITH DIFFERENT REAR SIDE POWER GAIN

(Reference to 335W Front)

Backside Power Gain	5%	10%	15%	20%	25%
Maximum Power At STC(Pmax)	352	369	385	402	419
Short Circuit Current(Isc)	10.90	11.43	11.92	12.41	12.94
Open Circuit Voltage(Voc)	41.8	41.8	41.8	41.9	41.9
Maximum Power Current(Imp)	10.35	10.85	11.32	11.79	12.29
Maximum Power Voltage(Vmpp)	34.0	34.0	34.0	34.1	34.1

STC: 1000W/m2 irradiance, 25°C cell temperature, AM1.5. NOCT: Irradiance at 800W/m², Ambient Temperature 20°C, wind speed 1m/s.



Beijing Multifit Electrical Technology Co.,Ltd

<http://www.multifitele.com>

